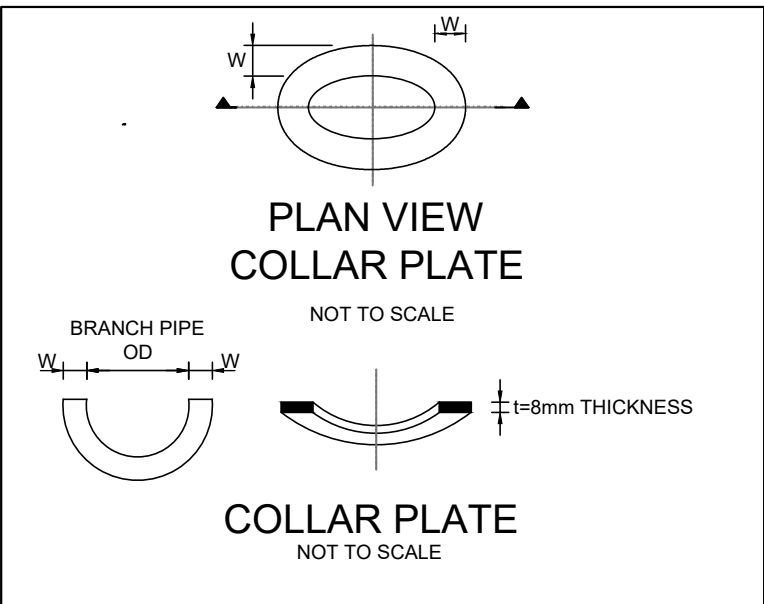
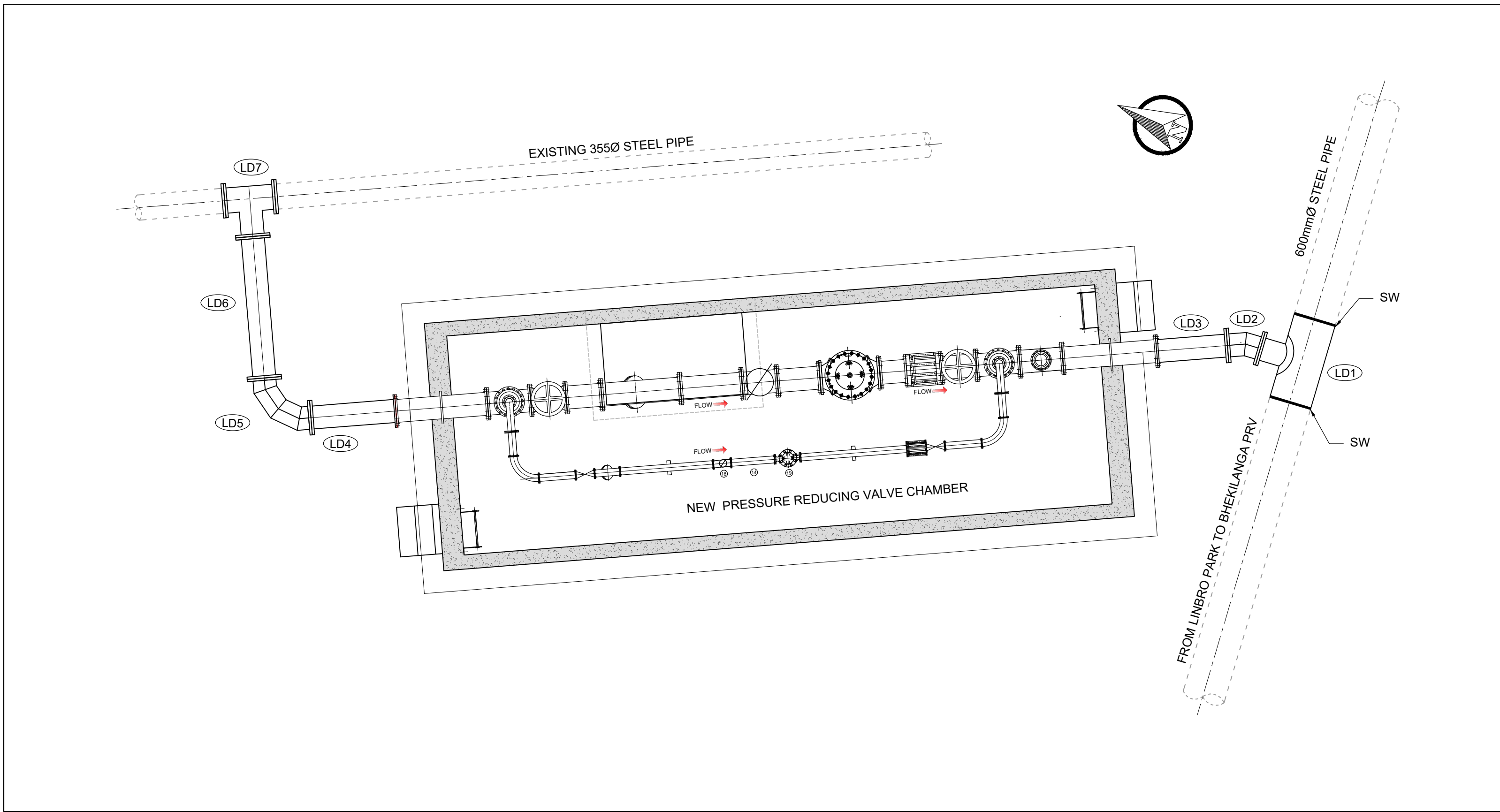




- GENERAL NOTES:**
- ALL FITTINGS SHALL BE LINED WITH 600 MICRONS FUSION BONDED EPOXY (SANS 1217 TYPE 2A) INTERNALLY AND EXTERNALLY. THE INTERNAL LINING SHALL BE SUITABLE FOR POTABLE WATER. DATA SHEETS FOR THE COATING SHALL BE FURNISHED TO THE EMPLOYER'S AGENT FOR APPROVAL.
 - ALL FLANGES TO BE DRILLED TO TABLE 2500/3 OF SANS 1123
 - FITTINGS ARE SUBJECT TO CHANGE UPON CONFIRMATION OF EXISTING PIPE MATERIALS
 - CONTRACTOR TO CONFIRM LOCATION OF ALL SERVICES AND DIMENSIONS OF FITTINGS PRIOR TO COMMENCEMENT OF FABRICATION OF PIPE FITTINGS. FINAL LEVELS TO BE CONFIRMED ON SITE PRIOR TO CONSTRUCTION
 - ALL BURIED PIPE FITTINGS AND FLANGED CONNECTIONS SHALL BE WRAPPED WITH PETROLATUM MASTIC AND PVC WRAPPING.
 - ALL PIPE FITTINGS SHALL BE TESTED AND INSPECTED IN LINE WITH THE PROJECT SPECIFICATIONS AND SANS 1200 L
 - A QUALITY CONTROL PLAN FOR THE COMPLETE MANUFACTURING PROCESS OF THE PIPE FITTINGS SHALL BE SUBMITTED TO THE EMPLOYER'S AGENT FOR APPROVAL BEFORE MANUFACTURING COMMENCES.
 - ALL DIMENSIONS SHOWN ARE IN MILLIMETRES UNLESS OTHERWISE STATED.
 - DRAWINGS MUST NOT BE SCALED
 - THIS DRAWING TO BE READ IN CONJUNCTION WITH THE GENERAL NOTES DRAWINGS AND ALL PROJECT SPECIFICATIONS.
 - ACCORDING TO THE COPYRIGHT ACT (ACT NO. 98 OF 1978) NO PART OF THIS DOCUMENT MAY BE REPRODUCED, STORED IN A RETRIEVAL SYSTEM OR TRANSMITTED IN ANY FORM OR BY ANY MEANS WHATSOEVER INCLUDING MECHANICAL, ELECTRONIC, PHOTOCOPYING, MICROFILMING OR ANY OTHER SYSTEM OF INFORMATION STORAGE WITHOUT WRITTEN PERMISSION OF JOHANNESBURG WATER.
 - SW = SITE WELD



PIPE SCHEDULE						
ITEM	DESCRIPTION	QTY	WALL THICKNESS (mm)	MARERIAL	PRESSURE RATING (kPa)	PIPE DIMENSIONS
LD1	UNEQUAL TEE PLAIN ENDED 610mm OD MAIN BARREL BEVELLED FOR SITE WELDING WITH A CENTRAL 323.9mm OD FLANGED BRANCH. FLANGE TO FLANGE – 1220mm. CL TO FLANGE – 610mm, collar plate w = 162.5 mm thickness t = 8 mm	1	8	API 5L GRADEX42 STEEL	1600	
LD2	323.9 mm OD TWO SEGMENTED ± 21° MITRE BEND, FLANGED BOTH ENDS. CENTRE TO FLANGE - 250 mm MITRES TO BE CONFIRMED ON SITE TO ALIGN WITH EXISTING PIPEWORK.	1	8	API 5L GRADEX42 STEEL	1600	
LD3	323.9 mm OD 1000 mm LONG PIPE FLANGED BOTH ENDS.	1	8	API 5L GRADEX42 STEEL	1600	
LD4	323.9 mm OD 1200 mm LONG PIPE FLANGED BOTH ENDS.	1	8	API 5L GRADEX42 STEEL	1600	
LD5	323.9 mm OD FOUR SEGMENTED 90° MEDIUM RADIUS BEND FLANGED BOTH ENDS. CENTRE TO FLANGE - 610 mm	1	8	API 5L GRADEX42 STEEL	1600	
LD6	323.9 mm OD 2000 mm LONG PIPE FLANGED BOTH ENDS.	1	8	API 5L GRADEX42 STEEL	1600	
LD7	REDUCING TEE 355.6 mm OD MAIN BARREL WITH A CENTRAL 323.9 mm OD BRANCH FLANGED ALL ENDS. FLANGE TO FLANGE - 710 mm, CENTRE TO FLANGE - 355 mm	1	12	API 5L GRADEX42 STEEL	1600	

TIE-IN CONNECTION - LENIN DRIVE

ISSUED FOR TENDER

CONSULTING ENGINEERS
LIDWALA CONSULTING ENGINEERS (SA) (PTY) LTD if
Tel: 081 120 1111 / 081 150 1212
Int: +27 11 793 5486
Private Bag 120
BRYANTON, 2021
Corner Main Office Park,
Block B, 1st Floor, Unit 8
2 Wayne Road Extension, 2191
Email: info@lidwala.com
Web: www.lidwala.com
Offices Botswana, Mozambique, Namibia, South Africa, Tanzania, Zambia, Zimbabwe



CLIENT
JOHANNESBURG WATER
1 MAIN STREET
SWISS HOUSE

DESIGNED	M. MURIGO	AUGUST 2022
DRAWN	G. MALINOWSKI	AUGUST 2022
CHECKED	M. MURIGO	AUGUST 2022
APPROVED BY:	SIGNATURE T. KLEYNHANS	DATE AUGUST 2022
ECSA REG. No.	20110139	
CHECKED BY:		
	SIGNATURE	DATE



17 HARRISON STREET
MARSHALLTOWN
2107

TEL: (011) 688-1400
FAX: (011) 688-1529



REPLACEMENT OF JOHANNESBURG WATER
600mm DIA STEEL PIPELINE FROM LINBRO PARK
RESERVOIR TO BHEKILANGA PRV STATION TO
ALEXANDRA

TIE-IN CONNECTION DETAILS
LENIN DRIVE

SURVEY INFORMATION		APPROVAL BY JW DEPOT		SCALE	AMENDMENTS			DRAWING No. JW14090R-AL-DET09-W
PROJECT SURVEYOR:		CHECKED			REV:	DESCRIPTION	DATE:	
DATE:		APPROVED BY:			A	ISSUED FOR TENDER PURPOSES ONLY	AUGUST 2022	
		SIGNATURE	DATE					
CCTV INFORMATION		APPROVAL BY JW PLANNING						
CCTV COMPANY:		CHECKED						
DATE:		APPROVED BY:						
		SIGNATURE	DATE					

PROJECT No.	JW14090R-AL	DRAWING No.	DET 09	REV.	A
SHEET	A1	1	OF	1	
ORIGINAL PAGE SIZE					
FILE No.					